



How to use OpenSky™ Email

OpenSky Receive Email



Revision: 1.00

© 2005 MacroSat - Satellite Internet Services.

All right reserved.

<http://www.MacroSat.Com>

Using OPENSKY™ to Receive Email

The general procedure is to change your incoming mail server to the OpenSky proxy and change your login to the special format which tells the OpenSky proxy where to collect your mail from.

When you send e-mails, you use your original Outgoing mail server via your terrestrial connection and ISP – just as you do now. When you receive e-mails, you use the OpenSky proxy server to get your e-mails from your original Incoming mail server and then send them to you over the broadband satellite connection.

Further configuration information for other mail applications is available in Application settings, Troubleshoot and 3rd Party Apps and OpenSky SOCKS Guide. If you are using OSDA, mail server issues are addressed in the OSDA document.

These instructions refer to Outlook but it should be possible to setup most other e-mail applications in a similar way. Change your incoming mail server from whatever it is now to the Opensky proxy server of 193.251.135.114 (for 33°E). 193.251.135.110 (for W3A).

Add # and your original incoming mail server to your mail account username. You can send/receive via your e-mail application or use the "Download E-mails" button in Opensky SatSMS. If you have an antispam application such as Mailwasher, you can configure it to use Opensky similarly.

If you have a mail application you do not configure to use the Opensky proxy, it will use your terrestrial connection as now.

Parameter	Change from	Change to
Incoming mail server (POP3)	mailserver.yourisp.com	193.251.135.114 (for 33E) 193.251.135.110 (for 7E)
Mail Username	Your username	yourusername#mailserver.yourisp.com
Outgoing mail server	no change	
Password	no change	

Outlook 2002, XP or Later

Open Outlook and click on Tools > Email Accounts.

Select "view or change existing email accounts" and click Next.

Click on your email account in the list and click Change.

Make a note of the name of the incoming mail server (POP3 or IMAP).

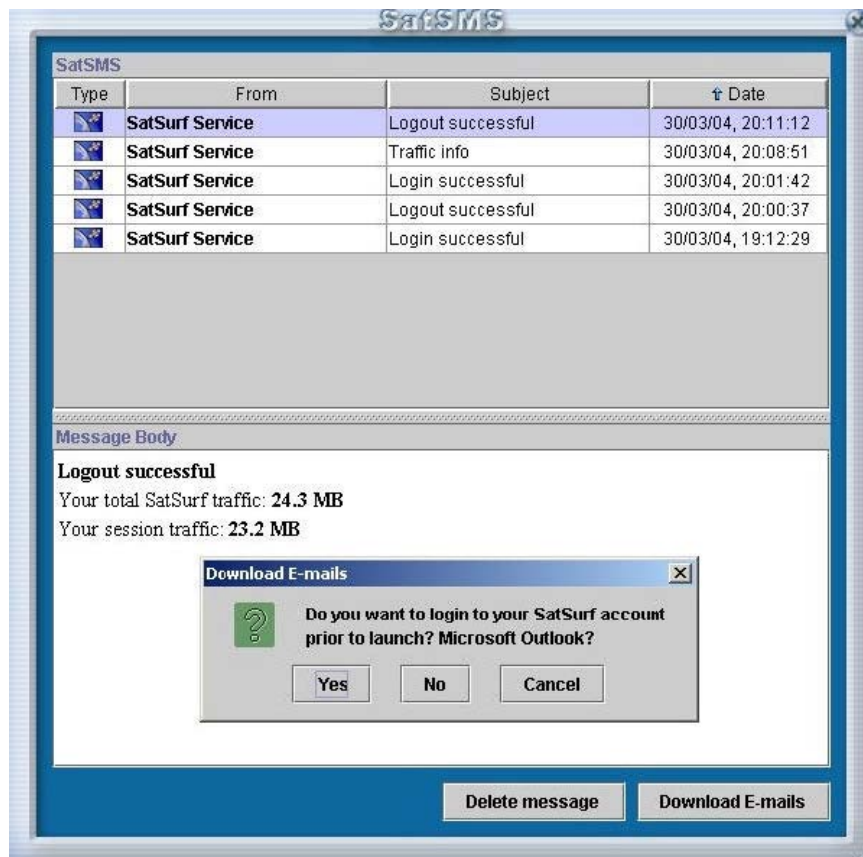
Change the incoming mail server to 193.251.135.114 for E-bird and 193.251.135.110 on Eutelsat W3.

In the Logon Information section, add a # to your original username, then add the original incoming mail server name after the #.

Do not add spaces or any other characters. Click on Next, then Finish.

This completes the setup for Outlook. Check OpenSky has detected the right settings:

Check OpenSky is detecting the right e-mail application in **Settings > Applications** Check you are using the right dial-up for your e-mail ISP in **Settings > Connections > Dialup Connections** Now you can: use Outlook Send/Receive to collect your e-mails if you happen to be online with OpenSky, or configure OpenSky to use your e-mail application when you click on Opensky's "Download E-mails" button (in SatSMS)



Other Settings

Applications

Settings > Applications

Select your e-mail application. Default setting is “use automatic transponder configuration”. This allows OSControl to tune your receiver and set PIDs as required by the service you are using.

You may be asked to send in a log report to help solve a support issue. Click “Create a log report” here.