



How to use OpenSky™ SatTV



Revision: 1.00

© 2004 MacroSat - Satellite Internet Services.

All right reserved.

<http://www.MacroSat.Com>

5.1 SatTV



Just Click on the SatTV icon to start the SatTV Click on the category Panel



Then click on the TV channel you want to watch. This will launch the player.



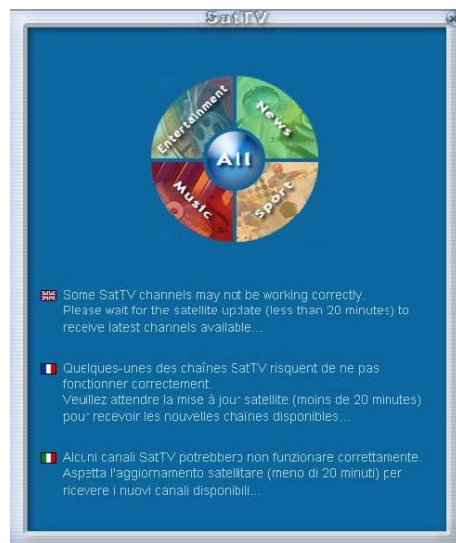
The player depends on which one you have installed. If you have installed QuickTime and the integrated OSPlayer, OSPlayer will start. If you have

Windows Media Player (6.4 or higher), that will start. We recommend you use the latest version of your player. If your player needs to download extra codecs, you will need to login to the internet.

Firewalls may block the video stream or access to it by your player. You will need to configure your firewall appropriately. Please see your firewall documentation for instructions.

The SatTV channel you choose may be on a different transponder to the SatSurf service. If so, you will not be able to use SatSurf. OSControl tunes your receiver and sets PIDs accordingly. If you are not using OSControl, you will have to set PIDs and transponder manually. OPENSKY™ messages will inform you. On your first startup, OPENSKY™ will need to receive the most-up-to-date configurations off-air from the system. This may take a few minutes.

Until the configurations have been updated, some SatTV channels may be unavailable.



© 2004 MacroSat - Satellite Internet Services.

All right reserved.

MacroSat Support Team