



How to Share OpenSky™ in LAN by Proxy Plus



Revision: 1.00

© 2004 MacroSat - Satellite Internet Services.

All right reserved.

<http://www.MacroSat.Com>

In order for Proxy Plus to function as intended it is necessary to properly configure the network for TCP/IP communication. · ·

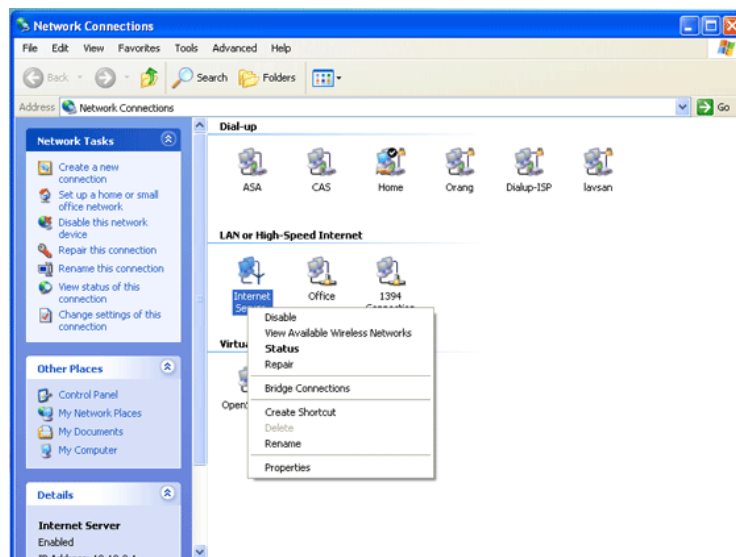
1. The Internet Server gateway/firewall should have at least two interfaces (e.g. Ethernet, RAS, Wireless, Satellite).
2. The interface connecting to the local area network (LAN) requires a manually assigned IP address (e.g. 192.168.0.1) and a subnet mask (e.g. 255.255.255.0).
3. The LAN interface must NOT have a default gateway.
4. All workstations should be in the same IP subnet (e.g. 192.168.0.2, 192.168.0.3...) as the LAN interface of the firewall and must use the firewall's IP address as the default gateway.
5. Each workstation can point to the ProxyPlys host for DNS resolution or they may point directly to your ISP's DNS servers.

Server LAN setting

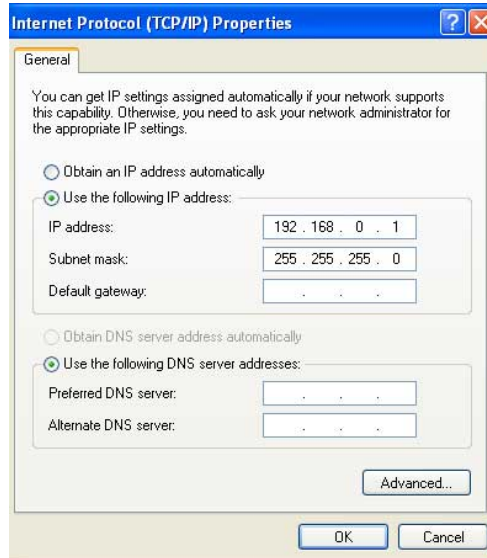
On Server you should to set the LAN interface as the figure:

Start->Control Panel -> Network Connection

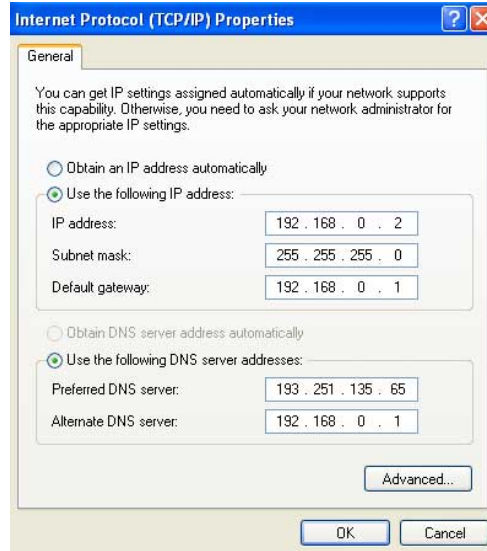
Choose your Ethernet LAN -> Properties



Set IP address and Subnet Mask as the following on the Server:



In your workstation your LAN interface should set as the following:



For example: if there are two workstations with one server your IP setting will be as the following table:

Computer	IP address	Subnet mask	Default Gateway
Server	192.168.0.1	255.255.255.0	
WorkStation#1	192.168.0.2	255.255.255.0	192.168.0.1
WorkStation#2	192.168.0.3	255.255.255.0	192.168.0.1

Note :
Please do not use of same IP addresses for workstation , all of workstations have to use of unique IP address.

Installation of the Proxy Plus

The actual version of the program

The newest version of installation files is always placed on WWW address <http://www.macrosat.com/opensky/proxyplus.exe> We recommend to keep an eye on changes and to get the actual version, which always includes new options and innovations or possible corrections of errors.

Installation

The program installs by executing of the downloaded file. During the installation you are offered to choose the destination directory and the type of installation. You can install it as a service using Windows NT - **Proxy+** executes itself on start-up and it runs even if no user is logged-in.

Windows95/98

On PCs running this operating systems **Proxy+** is viewed as a visible window. The window can be minimized by checking the check box on page [Administrator/Additional](#).

Installation as a Windows NT service

Proxy+ can run on Windows NT as a service. In this mode there is no window or an icon of the program. **Proxy+** runs on background and starts even if no user is logged into the system. The Installation provides you with the service option, if you want to change the type of this start-up, you can use the command prompt executing the executable file of **Proxy+** proxyplus.exe:

```
proxyplus.exe /remove  
removes Proxy+ from the services database.
```

```
proxyplus.exe /install  
adds Proxy+ to the services database.
```

If you want to stop the service **Proxy+** manually, run the program **Services** from the **Control Panel** and from the list shown choose **Fortech Proxy+**. You can stop the service using the **Stop** button and start it again using the **Start** button.

Using the admin. interface of the program

Proxy+ is configured via WWW browser only. You can start it from a PC running **Proxy+** or from any PC with TCP/IP protocol with access to the PC with **Proxy+**.

Essential conditions to access admin. interface:

- PC running **Proxy+** and the PC with WWW browser must use the TCP/IP protocol option.
- TCP/IP must be functional and correctly configured (correctly allocated IP addresses and host masks).
- both PCs must be able to contact themselves using the TCP/IP. It is enough if the command "ping x.x.x.x" executed from the command prompt of the DOS window returns correct replies (x.x.x.x is an IP address of the second PC).
- There must be **Proxy+** running on one those PCs.
- **Proxy+** must not have restricting rules that block the access to the PC with WWW browser. If you access the admin. interface from a PC running **Proxy+** the connection is always allowed.

WWW browser needs:

- the browser should support frames.
- the browser should work in graphic mode and display pictures.

Netscape and Microsoft browsers from version 3.X are fully convenient.

Address (URL) of admin. interface

Administrator's interface has this address: <http://x.x.x.x:port>, where <http://> informs the WWW browser to use HTTP protocol, x.x.x.x is the IP address or the domain name of the PC with **Proxy+** and the [port](http://x.x.x.x:port) is the number of the port, where the server expects the requests. The default value the **Proxy+** uses is 4400. You can change this value.

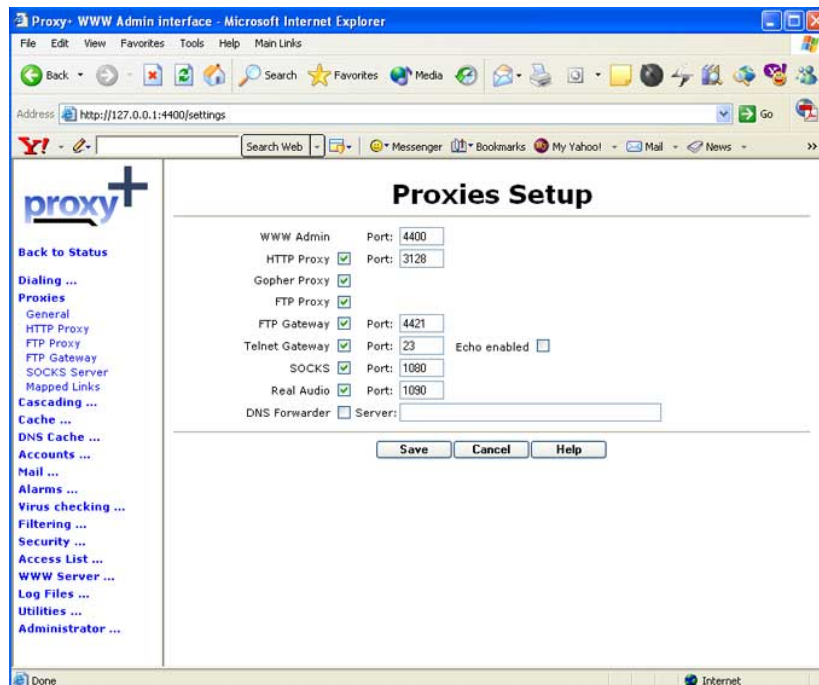
Examples:

1) IP address of the PC with **Proxy+** is 192.168.0.1 port interface is standard (4400)
URL: <http://192.168.0.1:4400>

2) If you start the WWW browser on the PC running **Proxy+** you can use both consequent entries
URL: <http://127.0.0.1:4400>
URL: <http://localhost:4400>

Address 127.0.0.1 or the name localhost exists on each PC with installed TCP/IP support. If you use it as a destination address during TCP/IP communication, it is always a connection ending in the PC where the command was executed (so called loopback).

Use of Internet explorer to use of Proxy plus interface panel, for proxy setting go to Proxies -> General
Enter values as the following figure then Press Save button.



Go to Cascading -> General

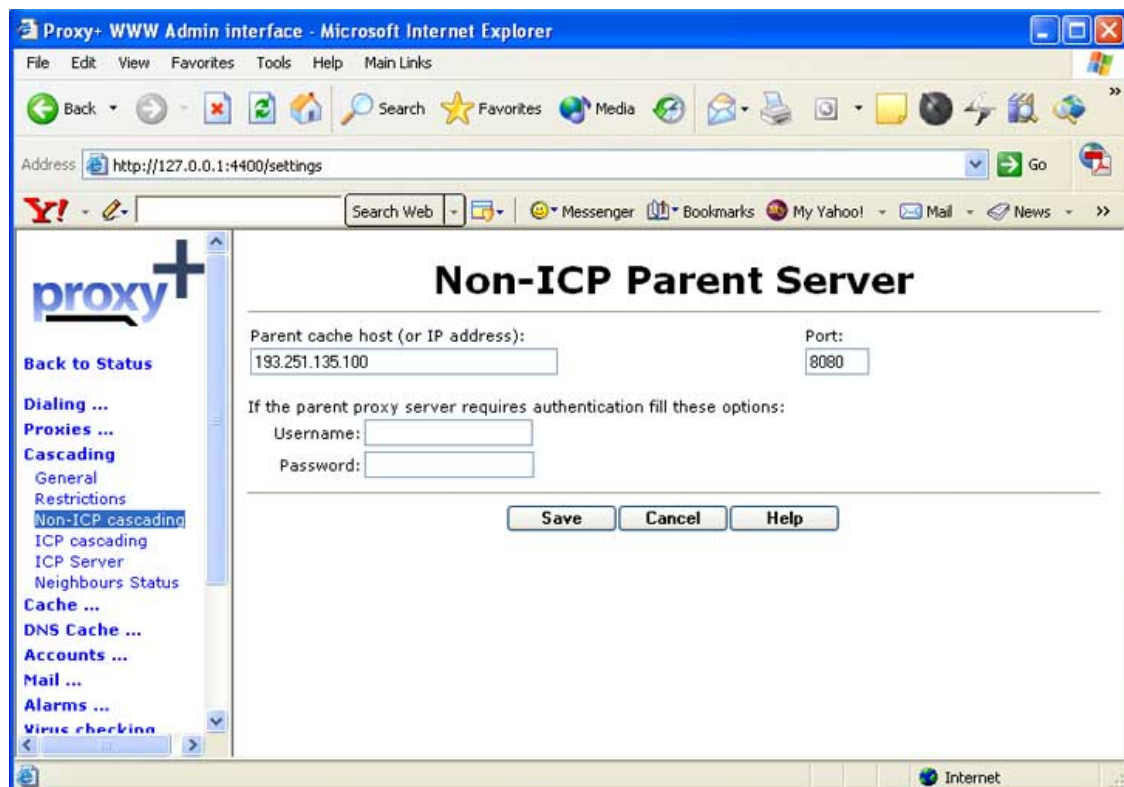
Object retrieval method: then Press Save button

Go to Cascading -> Non-ICP cascading and enter OpenSky™ proxy server address as the following figure.

Note :

Enter the OpenSky proxy address as the following table it depended on which transponder your account has been activated.

	W3-C3	W3-C12	E-Bird-A1
Http	proxy0.opensky.net port 8080 (193.251.135.100)	proxy3.opensky.net port 8080 (193.251.135.103)	proxy4.opensky.net port 8080 (193.251.135.104)



On your workstation , please run your browser(Internet explorer) , then change your setting as the following figure.

Tools -> Internet options -> Connections -> LAN settings -> Check Proxy Server



Now your all of workstations have access to internet via OpenSky Service.

If you need more information connect to www.macrosat.com/opensky



© 2004 MacroSat - Satellite Internet Services.

All right reserved.

MacroSat Support Team